

278 New Dorp Lane
Staten Island, NY 10306
Tel: (718) 701-5626
Fax: (718) 504-5078

\$729,000 - 2357 19th, Brooklyn

MLS® #456534

\$729,000

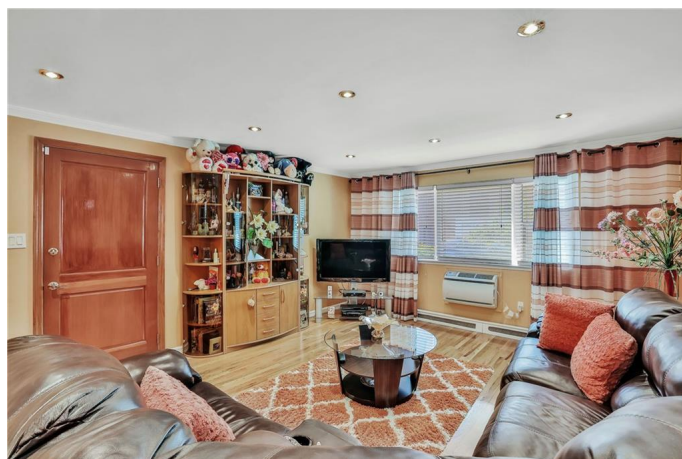
3 Bedroom, 2.00 Bathroom, 1,700 sqft
Condo

N/A, Brooklyn, New York

This centrally located condominium offers everything you need for a great living. While paying for a price of a condo, you have the feeling of living in a house! Prime Sheepshead Bay! The unit boasts about 1,700 square feet of living space and consists of two levels. Upper floor (1,053 sq ft) offers generously sized living room, kitchen , master suite with en-suite half/bath , large 2nd bedroom and full bathroom. Kitchen with window features custom made cabinets, granite counter top and mosaic backsplash. Plenty of closet space including walk-ins. Separate laundry room with LG stackable washer and dryer
Lower level (about 650 sq ft) offers big family room that can be used for a nanny suite, office or a teenager's suite with separate entrance. It also has a bathroom with stall shower. The entire apartment was renovated 6 years ago including the replacement of all windows. Parking spot is conveniently located next to the apartment. Extra storage space is adjacent to the unit.

The building is self managed and has very low monthly costs. The real estate tax is incredibly low as well.

Hurry! The unit will not last!



Built in 1986

Essential Information

MLS® #	456534
Price	\$729,000
Bedrooms	3
Bathrooms	2.00
Full Baths	2
Square Footage	1,700
Year Built	1986
Type	Condo
Sub-Type	Condo
Status	Active

Community Information

Address	2357 19th
Area	Sheepshead Bay
Subdivision	N/A
City	Brooklyn
County	Kings (Brooklyn)
State	New York
Zip Code	11229

Amenities

Amenities	Storage rooms
Utilities	Parking
Features	A/C Unit - Wall, Dishwasher, Dryer, Laundry Area

Interior

Appliances	Dishwasher, Dryer
------------	-------------------

Additional Information

Date Listed	October 19th, 2021
Days on Market	85

Listing courtesy of RE/MAX Edge



BROKER NAME].Data last updated: January 22nd, 2022 at 4:00pm EST