

**4001 Hylan Boulevard**  
**Staten Island, NY 10308**  
**Tel: (718) 966-9669**  
**Fax: (718) 504-5078**

---

## **\$2,750 - 1003 Bond Street 14, Asbury Park**

MLS® #21903389

### **\$2,750**

1 Bedroom, 1.00 Bathroom, 917 sqft  
Residential Rental on 0 Acres

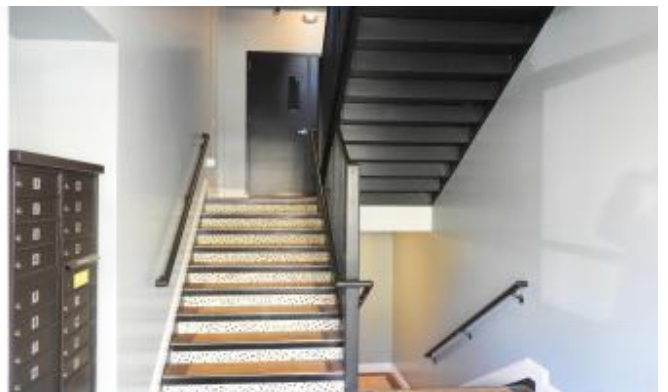
Ne Asbury Pk, Asbury Park, NJ

Newest rental addition to Asbury Park! The Metro on 3rd was once the Holy Spirit school, now it's brand new condos with washer & dryers in unit and includes 1 parking space. Centrally located, blocks to beach, downtown and train station. Unit has den which can double as a bedroom adding a wardrobe.



### **Essential Information**

MLS® #	21903389
Price	\$2,750
Bedrooms	1
Bathrooms	1.00
Full Baths	1
Square Footage	917
Square Footage	917.00
Acres	0.00
Type	Residential Rental
Sub-Type	Condominium
Style	Contemporary, Historic
Status	Active



### **Community Information**

Address	1003 Bond Street 14
Area	Asbury Park



Subdivision Ne Asbury Pk  
City Asbury Park  
County Monmouth  
State NJ  
Zip Code 07712

### Amenities

Features Ceiling Fan(s), Counter Top Range, Dishwasher, Electric Cooking, Intercom, Refrigerator, Washer  
Parking Assigned, Paved  
Garages No

### Interior

Heating Forced Hot Air  
Cooling Central Air  
# of Stories 1  
Stories 1.0

### Additional Information

Listing Office Berkshire Hathaway Homeservices Signature Properties  
Listing Agent Samuel J Boyd

### Listing Details

Listing Agent Samuel J Boyd  
Listing Office Berkshire Hathaway Homeservices Signature Properties

The data relating to real estate on this web site comes in part from the Internet Data Exchange program of the MLS of the Monmouth Ocean Regional REALTORS® and is updated as of May 26th, 2019 at 6:05am EDT (date/time). IDX information is provided exclusively for consumers' personal, non-commercial use and may not be used for any purpose other than to identify prospective properties consumers may be interested in purchasing.