

**4001 Hylan Boulevard**  
**Staten Island, NY 10308**  
**Tel: (718) 966-9669**  
**Fax: (718) 504-5078**

---

## **\$4,500 - 305 Bond Street 1, Asbury Park**

MLS® #21904028

### **\$4,500**

Bedroom, Bathroom, 1,800 sqft  
Commercial / Industrial / Business on 0 Acres

N/A, Asbury Park, NJ

High profile rental space in the heart of Downtown Asbury Park. 13ft ceilings, original hard wood floors, bright windows. Brand new AC/ & furnace. Spacious basement great for storage if needed.

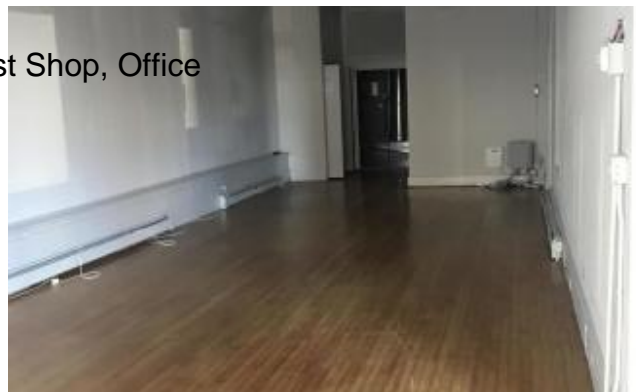


### **Essential Information**

MLS® #	21904028
Price	\$4,500
Square Footage	1,800
Square Footage	1800.00
Acres	0.00
Type	Commercial / Industrial / Business
Sub-Type	Retail
Style	Cards/Gift, Convenience, Florist Shop, Office
Status	Active

### **Community Information**

Address	305 Bond Street 1
Area	Asbury Park
Subdivision	N/A
City	Asbury Park
County	Monmouth
State	NJ
Zip Code	07712



## Amenities

Parking On Street

Garages No

## Interior

Heating Forced Hot Air

Cooling Central Air

# of Stories 3

## Exterior

Exterior Features Display Window

Roof Flat

Construction Stone

## Additional Information

Listing Office Berkshire Hathaway Homeservices Signature Properties

Listing Agent Samuel J Boyd

Zoning Office, Professional

## Listing Details

Listing Agent Samuel J Boyd

Listing Office Berkshire Hathaway Homeservices Signature Properties

The data relating to real estate on this web site comes in part from the Internet Data Exchange program of the MLS of the Monmouth Ocean Regional REALTORS®®, and is updated as of May 26th, 2019 at 5:35pm EDT (date/time). IDX information is provided exclusively for consumers' personal, non-commercial use and may not be used for any purpose other than to identify prospective properties consumers may be interested in purchasing.