

278 New Dorp Lane  
 Staten Island, NY 10306  
 Tel: (718) 701-5626  
 Fax: (718) 504-5078

# \$2,250,000 - 1007-1015 Asbury Avenue, Asbury Park

MLS® #21906391

## \$2,250,000

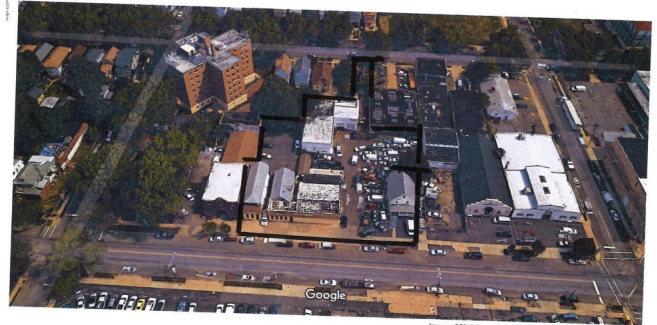
Bedroom, Bathroom, 37,509 sqft  
 Commercial / Industrial / Business on 0.00 Acres

N/A, Asbury Park, NJ

Welcome investors! Near 40,000 square feet at the Gateway to Asbury Park's Asbury Avenue. The property presently has tenants operating their businesses who will probably stay as long as you want while you plan your development ideas.



Google Maps 1011 Asbury Ave

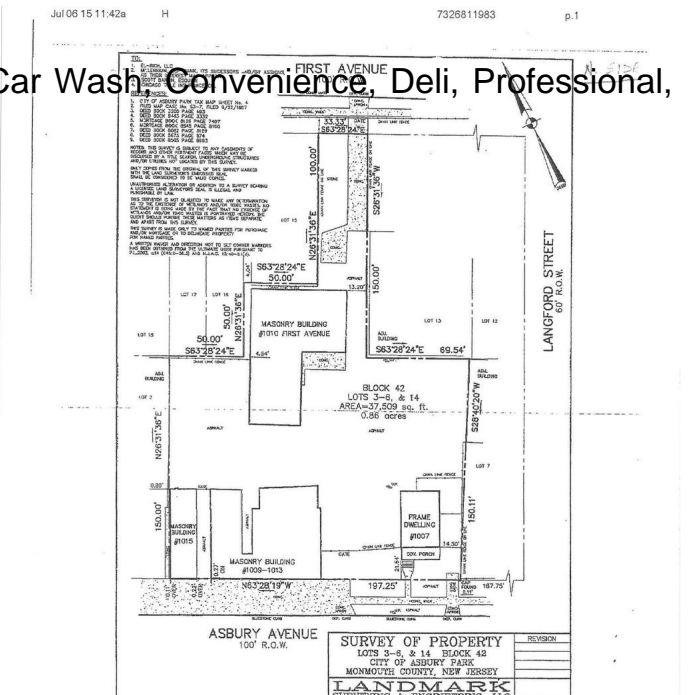


## Essential Information

MLS® #	21906391
Price	\$2,250,000
Square Footage	37,509
Square Footage	37509.00
Acres	0.00
Type	Commercial / Industrial / Business
Sub-Type	Commercial
Style	Apartments, Automobile S, Car Wash, Convenience, Deli, Professional, Retail, Day Care, Office
Status	Active

## Community Information

Address	1007-1015 Asbury Avenue
Area	Asbury Park
Subdivision	N/A
City	Asbury Park



County	Monmouth
State	NJ
Zip Code	07712

### **Amenities**

Parking	Open Lot, On Street, Off Street, On Site
Garages	Yes

### **Interior**

# of Stories	1
--------------	---

### **Exterior**

Construction	Stucco
--------------	--------

### **Additional Information**

Zoning	Mixed, Multi-Use, Professional, Residential
--------	---

### **Listing Details**

Listing Agent	Samuel J Boyd
Listing Office	Berkshire Hathaway HomeServices Signature Properties

The data relating to real estate on this web site comes in part from the Internet Data Exchange program of the MLS of the Monmouth County Association of REALTORS®, and is updated as of March 7th, 2021 at 10:06am EST (date/time). IDX information is provided exclusively for consumers' personal, non-commercial use and may not be used for any purpose other than to identify prospective properties consumers may be interested in purchasing.