

4001 Hylan Boulevard
Staten Island, NY 10308
Tel: (718) 966-9669
Fax: (718) 504-5078

\$2,000 - 1206 Sunset Avenue, Asbury Park

MLS® #21939801

\$2,000

2 Bedroom, 1.00 Bathroom,
Residential Rental on 0 Acres

Nw Asbury Pk, Asbury Park, NJ

Two level 2 bedroom apartment on second and third floor in charming Victorian house with view of Deal Lake. Living/dining area, kitchen, full bath, bedroom and washer/dryer on second floor and second bedroom, den/office, walk-in closet on third floor. One assigned off-street parking space. All utilities included.

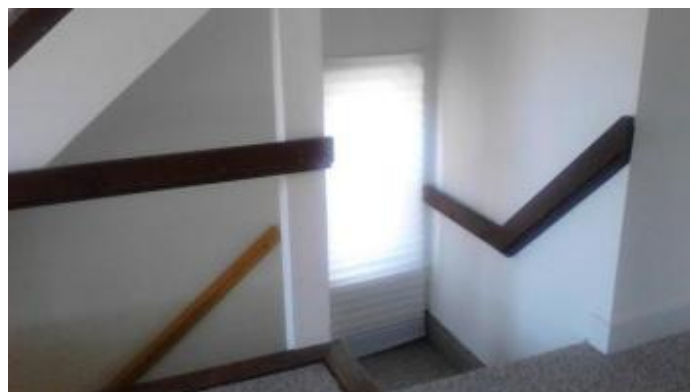
Built in 1930

Essential Information

MLS® #	21939801
Price	\$2,000
Bedrooms	2
Bathrooms	1.00
Full Baths	1
Square Footage	0.00
Acres	0.00
Year Built	1930
Type	Residential Rental
Sub-Type	Apartment
Style	Victorian
Status	Active

Community Information

Address 1206 Sunset Avenue





Area	Asbury Park
Subdivision	Nw Asbury Pk
City	Asbury Park
County	Monmouth
State	NJ
Zip Code	07712

Amenities

Features	Dryer, Refrigerator, Stove, Washer
Parking Spaces	2
Parking	Off Street
Garages	No

Interior

Heating	Radiator
Cooling	AC Units
# of Stories	2
Stories	2.0

School Information

Elementary	Thurgood Mar
Middle	Asbury Park
High	Asbury Park

Additional Information

Listing Office	Berkshire Hathaway Homeservices Signature Properties
Listing Agent	Carol A Torre

Listing Details

Listing Agent	Carol A Torre
Listing Office	Berkshire Hathaway Homeservices Signature Properties

The data relating to real estate on this web site comes in part from the Internet Data Exchange program of the MLS of the Monmouth Ocean Regional REALTORS® and is updated as of January 17th, 2020 at 1:06pm EST (date/time). IDX information is provided exclusively for consumers' personal, non-commercial use and may not be used for any purpose other than to identify prospective properties consumers may be interested in purchasing.