

# \$429,000 - 2900 Ocean, Brooklyn

MLS® #493282

**\$429,000**

1 Bedroom, 1.00 Bathroom, 802 sqft  
Condo

N/A, Brooklyn, New York

Prime Sheepshead Bay â€” Spacious  
East-Facing 1-Bedroom Condo in Elevator  
Building

Welcome to this beautifully maintained, oversized east-facing 1-bedroom, 1-bathroom condo located on the 5th floor of a well-kept elevator building in the heart of Sheepshead Bay. Offering 802 sq. ft. of thoughtfully designed living space, this sun-drenched residence features high ceilings, refinished hardwood floors, and abundant natural light throughout the day.

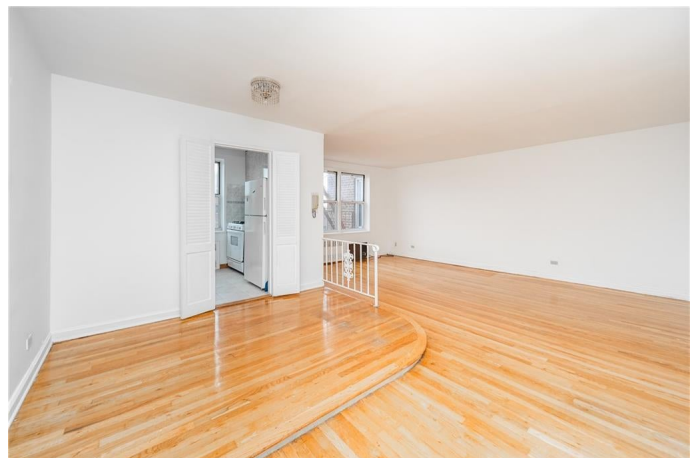
The windowed kitchen provides ample cabinet space and the potential for modern upgrades, while the open dining area flows seamlessly into a spacious living roomâ€”ideal for both relaxing and entertaining. The windowed bathroom adds a refreshing sense of ventilation and natural light.

The king-sized bedroom features two large windows and two closets, offering generous storage. Additional highlights include multiple closets throughout the unit, two laundry rooms (one in each wing), and two outdoor private seating areas with benchesâ€”perfect for enjoying the fresh air.

Built in 1957

## Essential Information

MLS® #	493282
Price	\$429,000



Bedrooms	1
Bathrooms	1.00
Full Baths	1
Square Footage	802
Year Built	1957
Type	Condo
Sub-Type	Condo
Status	Active

### Community Information

Address	2900 Ocean
Area	Sheepshead Bay
Subdivision	N/A
City	Brooklyn
County	Kings (Brooklyn)
State	New York
Zip Code	11235

### Amenities

Amenities	Laundry â€“ Card Operated
Utilities	Gas, Heat, Sewer, Water
Features	Dishwasher, Microwave, Refrigerator, Stove

### Interior

Appliances	Dishwasher, Microwave, Refrigerator, Stove
------------	--

### Additional Information

Date Listed	June 6th, 2025
Days on Market	110
Tax	\$3,588

Listing courtesy of eXp Realty BKNY

© 2025 Brooklyn New York MLS. All rights reserved. IDX information is provided exclusively for consumers' personal, non-commercial use and may not be used for any purpose other than to identify prospective properties consumers may be interested in purchasing. Information is deemed reliable but is not guaranteed accurate by the MLS or [INSERT BROKER NAME]. Data last updated: October 12th, 2025 at 8:00am EDT