

\$869,000 - 2069 28th, Brooklyn

MLS® #496262

\$869,000

3 Bedroom, 2.00 Bathroom, 1,785 sqft

Single Family

N/A, Brooklyn, New York

Madison / Sheepshead Bay â€“ East 28th Street/ Avenue T. One Family Attached Brick with Private Parking.

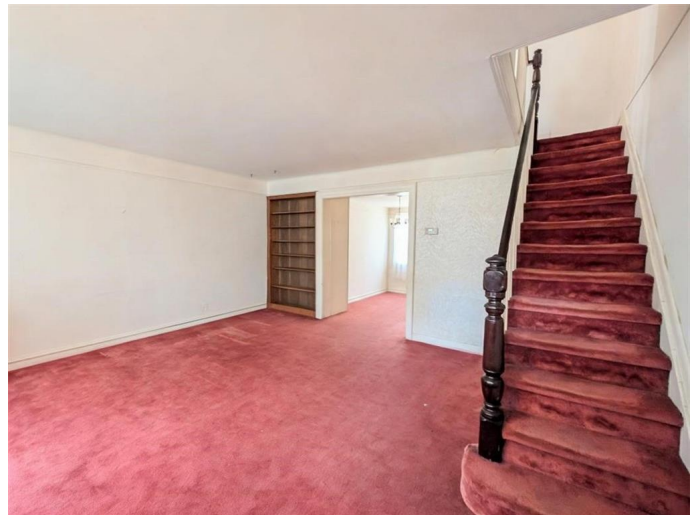
On This Great Tree Lined Residential Block, Youâ€™ll Find This One Family Brick Duplex That Offers a Flexible Layout to Meet all Of Your Needs.

The First Floor Offers a Large Living Room, Formal Dining Room and Kitchen That Leads to a Covered Rear Trex Deck with Access to the Back Yard and Garage.

The Second Floor Offers Three Bedrooms and a Full Bathroom with Skylight.

The lower Level, with a Half Bathroom and Both a Front and Rear Entrance, Offers a Variety of Options including Additional Space for a Playroom, Home Office or for Visiting guest Family and Friends.

Amenities Include Private Parking with a Rear Community Driveway and One Car Garage, Gas Heating System, Hardwood Flooring This Convenient Location Offers Close Proximity to Marine Park, Public Transportation, Restaurants, Schools, Avenue U Shopping and all That This Great Neighborhood Has to Offer.



Built in 1930

Essential Information

MLS® # 496262

Price \$869,000

Bedrooms	3
Bathrooms	2.00
Full Baths	1
Half Baths	1
Square Footage	1,785
Year Built	1930
Type	Single Family
Sub-Type	Single Family
Style	Duplex
Status	Active

Community Information

Address	2069 28th
Area	Madison
Subdivision	N/A
City	Brooklyn
County	Kings (Brooklyn)
State	New York
Zip Code	11229

Amenities

Features	Porch
----------	-------

Interior

Interior	Hardwood
Heating	Steam/Radiator
Has Basement	Yes
Basement	Full, Semi-Finished

Exterior

Exterior	Brick
Lot Description	17'.67 X 100'
Roof	Flat
Foundation	Block

Additional Information

Date Listed	October 1st, 2025
Days on Market	8
Zoning	R4

Tax

\$7,236



Listing courtesy of George L Clark Inc

© 2025 Brooklyn New York MLS. All rights reserved. IDX information is provided exclusively for consumers' personal, non-commercial use and may not be used for any purpose other than to identify prospective properties consumers may be interested in purchasing. Information is deemed reliable but is not guaranteed accurate by the MLS or [INSERT BROKER NAME]. Data last updated: October 12th, 2025 at 2:00am EDT