

\$1,274,999 - 2809 28th, Brooklyn

MLS® #496408

\$1,274,999

2 Bedroom, 3.00 Bathroom, 1,666 sqft
Condo

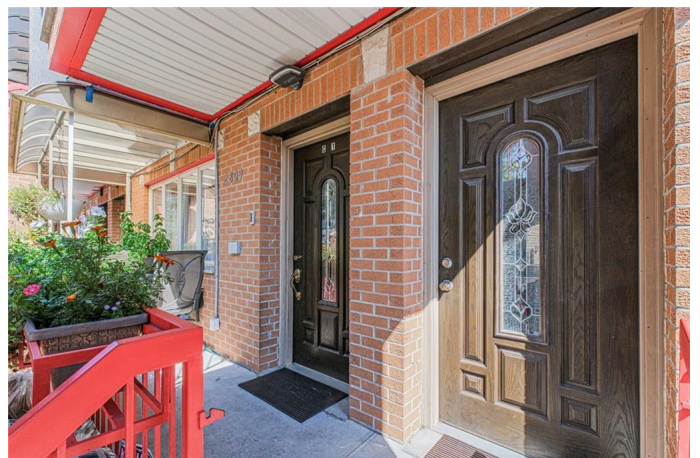
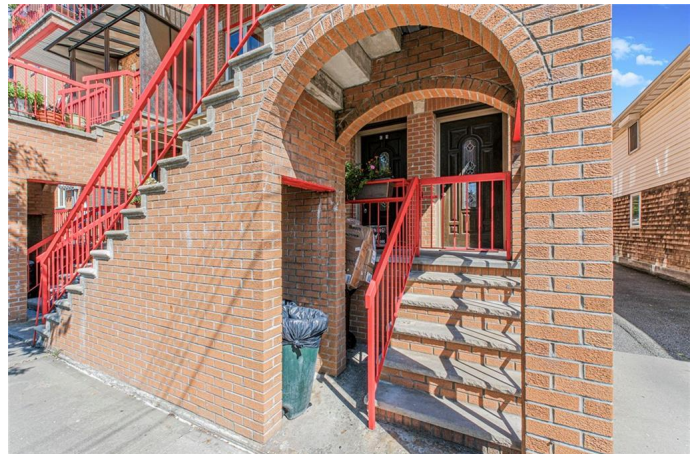
N/A, Brooklyn, New York

Welcome to this spacious & unique Condo in Sheepshead Bay - 2809 E 28th St, Unit 1C. This upgraded 2-bed, 3-bath condo offers nearly 1,700 sq ft of living space with a flexible layout—including a finished basement with a private entrance, high ceilings, recessed lighting, a full bathroom, and a custom home theater. It's incredibly rare to find a Brooklyn condo with two separate private entrances, offering unmatched flexibility and privacy. A second entrance leads to the main level, featuring a sunlit primary bedroom with en suite bath, updated bathrooms, in-unit laundry, and a private patio for outdoor relaxation. One permanently deeded parking spot included, plus low HOA fees. All just minutes from Emmons Ave shopping, dining, and transit. Basement offers potential for a 3rd bedroom or office. A rare find with space, style, and versatility—don't miss it!

Built in 2014

Essential Information

MLS® #	496408
Price	\$1,274,999
Bedrooms	2
Bathrooms	3.00
Full Baths	1
Square Footage	1,666
Year Built	2014
Type	Condo



Sub-Type	Condo
Status	Active

Community Information

Address	2809 28th
Area	Sheepshead Bay
Subdivision	N/A
City	Brooklyn
County	Kings (Brooklyn)
State	New York
Zip Code	11235

Amenities

Amenities	NONE
Utilities	Sewer, None
Features	Dishwasher, Laundry Area, Microwave, Refrigerator

Interior

Appliances	Dishwasher, Microwave, Refrigerator
------------	-------------------------------------

Additional Information

Date Listed	October 7th, 2025
Tax	\$9,972

Listing courtesy of Nord East Realty Group LLC

© 2025 Brooklyn New York MLS. All rights reserved. IDX information is provided exclusively for consumers' personal, non-commercial use and may not be used for any purpose other than to identify prospective properties consumers may be interested in purchasing. Information is deemed reliable but is not guaranteed accurate by the MLS or [INSERT BROKER NAME].Data last updated: October 12th, 2025 at 2:00am EDT