

\$825,000 - 9718 Ft Hamilton, Brooklyn

MLS® #496474

\$825,000

2 Bedroom, 2.00 Bathroom, 909 sqft
Condo

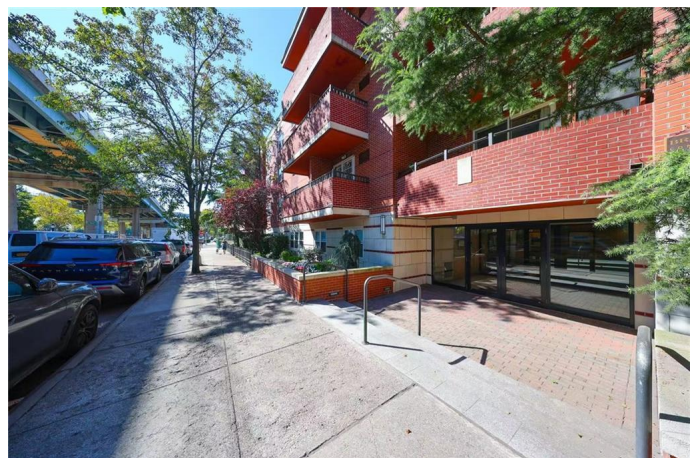
N/A, Brooklyn, New York

This two-bedroom, two-bathroom condo is conveniently located right next to John J. Carty Park, offering numerous family-friendly activities, including a kids' playground, ping pong tables, tennis courts, and basketball courts. It's just minutes away from Shore Road, the R train, and express buses to Lower Manhattan. Schools, retail stores, and supermarkets are also nearby. This is the top floor of the building. Two balconies and can see the Verrazzano Bridge from the balcony. The unit features hardwood floors, an open kitchen with granite countertops, and stainless-steel appliances, including dishwasher. Two full bathroom with bath tub. Washer and dryer hookup within the unit also. The master bedroom with the walk-in closet. Additional amenities include one indoor parking space (suitable for a large SUV) . The building also offers a bike room and a 2' x 5' x 8' storage case. Security is ensured with a video intercom system, and the building is wheelchair accessible. This building has everything you need in a mid-luxury condo. Welcome to Bay Ridge.

Built in 2005

Essential Information

MLS® #	496474
Price	\$825,000
Bedrooms	2



Bathrooms	2.00
Full Baths	2
Square Footage	909
Year Built	2005
Type	Condo
Sub-Type	Condo
Status	Active

Community Information

Address	9718 Ft Hamilton
Area	Bay Ridge
Subdivision	N/A
City	Brooklyn
County	Kings (Brooklyn)
State	New York
Zip Code	11209

Amenities

Amenities	NONE
Utilities	Sewer, Sprinkler System, Water, Other
Features	A/C Unit - Window, Elevator, Laundry Area, Refrigerator, Stove, Terrace, Washer

Interior

Appliances	Refrigerator, Stove, Washer
------------	-----------------------------

Additional Information

Date Listed	October 9th, 2025
Days on Market	1
Tax	\$3,444

Listing courtesy of RE/MAX Edge

© 2025 Brooklyn New York MLS. All rights reserved. IDX information is provided exclusively for consumers' personal, non-commercial use and may not be used for any purpose other than to identify prospective properties consumers may be interested in purchasing. Information is deemed reliable but is not guaranteed accurate by the MLS or [INSERT BROKER NAME]. Data last updated: October 12th, 2025 at 2:00am EDT